



Corporate Directory

Name of the company

Eastern Bank PLC.

Legal form

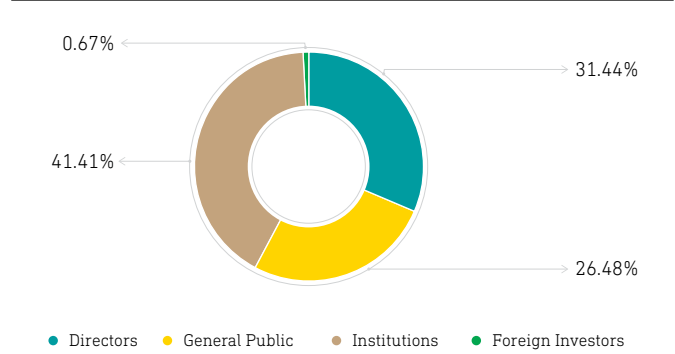
A public limited company incorporated in Bangladesh on 08 August 1992 to carry out all kinds of banking businesses in and outside Bangladesh. Having taken over the businesses, assets, liabilities and losses of Bank of Credit & Commerce International (Overseas) Limited as per BCCI Reconstruction Scheme 1992 of Bangladesh Bank, the Bank commenced its operations on 16 August 1992.

Ownership composition

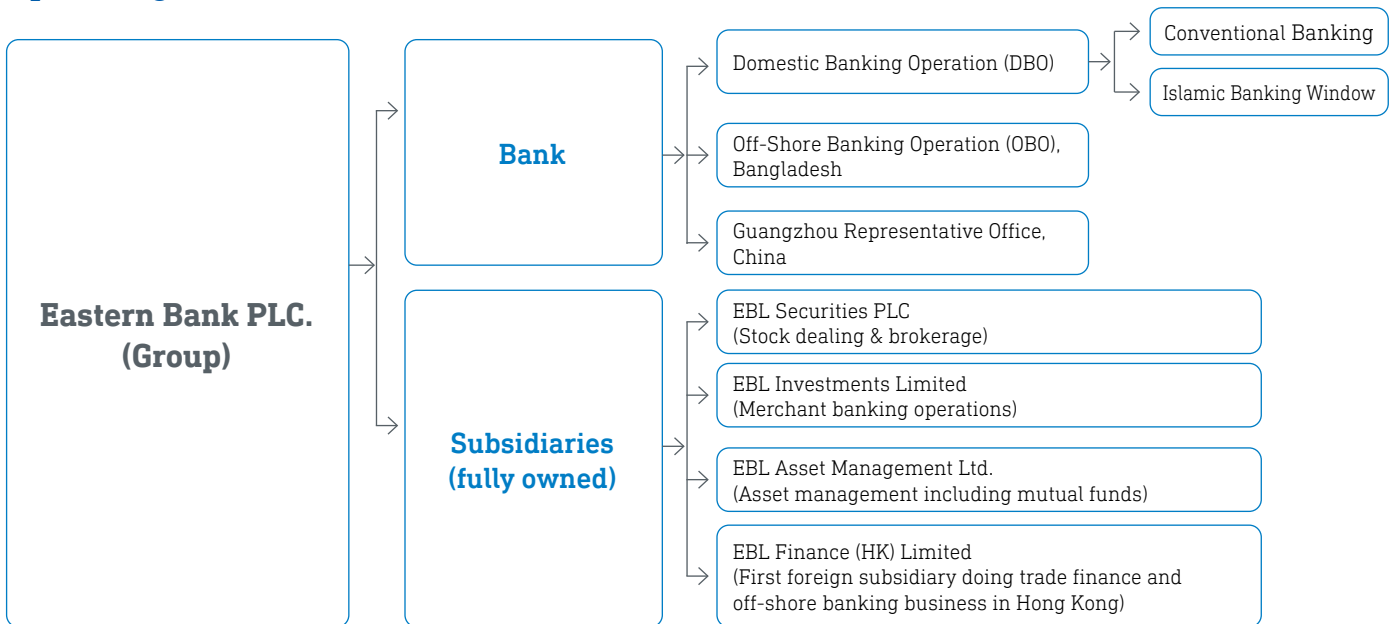
As on 31 December 2025, category-wise shareholding position of EBL is presented below:

Shareholders' group	No. of shares	% Of total Shares	Taka
Directors	501,666,995	31.44%	5,016,669,950
General Public	422,609,151	26.48%	4,226,091,510
Institutions	660,830,555	41.41%	6,608,305,550
Foreign investors	10,706,687	0.67%	107,066,870
Total	1,595,813,388	100.00%	15,958,133,880

Shareholding (%)



Operating structure of EBL



Size of the organization

As on 31 December 2025, our Bank's total regulatory capital is BDT 61,657 million and CRAR is 15.49%. Our profit after tax is BDT 9,010 million and total assets are BDT 762 billion.

Capital

Particulars	2025	2024
Authorized Capital (face value per share: BDT 10)	25,000,000,000	25,000,000,000
Paid-up Capital (face value per share: BDT 10)	15,958,133,880	13,581,390,540

Location of EBL's operations

Registered office & Head office	Division	Branch	Priority Center	Sub Branch	Agent Outlet	Islamic Banking Window	ATM/CRM/CDM/RTDM
100 Gulshan Avenue Dhaka-1212, Bangladesh Phone: + 88 09666777325 Swift: EBLDBDDH e-mail: info@ebl-bd.com Web: www.ebl.com.bd	Barishal	1	-	-	-	1	2
	Chattogram	26	4	14	38	6	100
	Dhaka	46	15	24	32	7	286
	Mymensingh	1	-	-	1	-	2
	Khulna	4	1	5	31	1	13
	Rajshahi	2	1	3	14	2	9
	Rangpur	1	-	3	1	1	6
	Sylhet	4	2	3	2	2	22
	Total	85	23	52	119	20	440

Stock exchange listing

Ordinary share of the Bank is listed with both Dhaka Stock Exchange PLC and Chittagong Stock Exchange PLC. Shares of EBL are categorized as 'A' in both the Stock Exchanges.

Listing year



Dhaka Stock Exchange PLC.
20 March 1993



Chittagong Stock Exchange PLC.
28 September 2004

Our Principal Activities and Markets

Core business	Principal activities	Target market
Corporate	<p>A wide array of products and customized solutions is offered to corporate clients through relationship units spread out in Dhaka and Chattogram. These offerings encompass a variety of financial services.</p> <ul style="list-style-type: none"> • Term lending • Project financing • Working capital financing • Trade financing • Supply chain financing • Cash management solutions • Syndication • Advisory services etc. 	<p>Large and mid-corporate clients that primarily focus on:</p> <ul style="list-style-type: none"> • RMG sector • Textile industry • Pharmaceutical industry • Telecommunication sector • Food and allied industries
Retail & SME	<p>We offer a diverse portfolio of deposit, loan, and card services, meticulously crafted to align with the ever-changing needs and lifestyle preferences of our clientele. These offering includes:</p> <ul style="list-style-type: none"> • Retail & SME deposit • Various personal and SME financing • Payroll banking solutions • Student banking products • Diverse card services • Digital banking services • Agent banking etc. 	<p>Household segment is the target market for retail products and for SME we primarily focus on small and medium enterprises.</p>
Treasury	<p>The primary activities of treasury business are:</p> <ul style="list-style-type: none"> • Management of fund, cash flow, liquidity and overall asset-liability of the Bank • Investing in securities, foreign exchange, derivative instruments • Managing interest rate risk, liquidity risk and exchange rate risk of the Bank. 	<p>Treasury mainly operates in money market with different financial institutions.</p>



EBL is the first Bangladeshi Bank rated by Moody's, a renowned global rating agency, for the first time in March 2016

Moody's current rating: B2

Outlook: Negative

CRAB's current entity rating:

Long term: AAA

Short term: ST-1

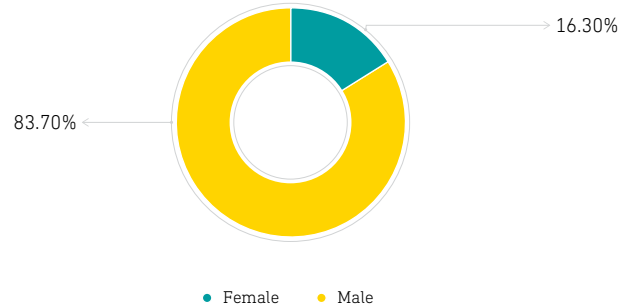
Outlook: Stable

Manpower

Employees	2025	2024
Permanent employees	3,175	2,921
Trainee employees	1,561	1,507
Total	4,736	4,428

Employees	2025	2024
Male	3,964	3,667
Female	772	761
Total	4,736	4,428

Employees by gender 2025



Board of Directors & their representation in committees

Board of Directors			Executive Committee (EC)	Audit Committee (AC)	Risk Management Committee (RMC)
Sl.	Name	Position	Status with the Committee		
1	Md. Showkat Ali Chowdhury	Chairman			
2	Anis Ahmed	Director	Member		
3	Salina Ali	Director	Chairman		
4	Kishwar Jahan Sayeeda Banu	Director			
5	Gazi Md. Shakhawat Hossain	Director		Member	Chairman
6	Mufakkarul Islam Khasru	Director		Member	Member
7	Zara Namreen	Director	Member		
8	Ruslan Nasir	Director		Member	
9	Mahreen Nasir	Director			Member
10	Md. Abdur Rahim	Director			
11	Khondkar Atique-e-Rabbani	Independent Director		Chairman	
12	Ali Reza Iftekhar (Retired on 18-04-2026)	Managing Director	Member		
	Md. Abdullah Al Mamun, FCS	Company Secretary	Secretary	Secretary	Secretary

Board of Directors of the Subsidiaries

Name of the Subsidiaries	Name of the Directors (Nominated by EBL)	Position
EBL Securities PLC. (EBLSL)	Mohd. Noor Ali	Chairman
	Mufakkarul Islam Khasru	Director
	Ali Reza Iftekhar	Director
	Masudul Hoque Sardar	Director
	Ahmed Shaheen	Director
	Ahmed Jamal	Independent Director
	Tauhidul Ashraf, FCS	Managing Director

Name of the Subsidiaries	Name of the Directors (Nominated by EBL)	Position
EBL Investments Limited (EBLIL)	Mufakkarul Islam Khasru	Chairman
	Kishwar Jahan Sayeeda Banu	Director
	Ruslan Nasir	Director
	Ahmed Arefin FCA	Managing Director
EBL Asset Management Ltd. (EBLAML)	Barrister K.M. Tanjib-ul Alam	Chairman
	Zara Namreen	Director
	Mahreen Nasir	Director
	Mohammad Rayhanul Arefin	Managing Director (Current Charge)
EBL Finance (HK) Limited	Ali Reza Iftekhar	Director
	Ahmed Shaheen	Director
	Ishtiaq Hasan	Managing Director & CEO

Accounting year

1 January to 31 December

Auditors

A. Qasem & Co., Chartered Accountants
(A member firm of ECOVIS International)

Corporate governance auditor

Suraiya Parveen & Associates, Chartered Secretaries

Tax consultant

ACNABIN Chartered Accountants
(A network member of Bakertilly)

Legal advisors

Sadat Sarwat & Associates