



Corporate Social Responsibility

At EBL, responsible and ethical banking lies at the heart of our purpose and operations. Guided by our core values, we integrate environmental and social considerations into our business decisions to create long-term value for our stakeholders while contributing to a sustainable society. Sustainability is embedded in our business model, with a focus on generating positive impact for communities, particularly underserved segments through targeted Corporate Social Responsibility (CSR) initiatives.

EBL remains fully compliant with the CSR guidelines of Bangladesh Bank ensuring that our initiatives are strategically aligned with the Sustainable Development Goals (SDGs). Our efforts contribute meaningfully to social welfare, environmental sustainability and poverty alleviation with a focus on creating inclusive growth. Through transparency, accountability and responsible corporate practices, EBL continues to reaffirm its commitment of building a more equitable, resilient and sustainable Bangladesh.

Corporate citizenship strategy

At EBL, responsible banking principles are embedded in our corporate citizenship initiatives, focusing on delivering meaningful support to vulnerable and underserved communities. Strong governance, regulatory compliance and effective monitoring ensure that every taka invested through CSR creates measurable and lasting social value. In line with the Sustainable Finance Department circulars of Bangladesh Bank, EBL has adopted a comprehensive, Board-approved CSR Policy that provides a structured framework for project evaluation, selection and implementation. Through a standardized due diligence process, all initiatives are assessed to ensure transparency, accountability and maximum social impact.

Our major CSR activity areas



Education (30%)

We allocate 30% of our CSR funds to provide scholarships for underprivileged students, enabling access to quality education at reputable institutions.



Health (30%)

30% of our CSR budget is dedicated to strengthening healthcare services for underserved communities, ensuring improved access to essential and life-saving medical care.



Environment and Climate Change Mitigation & Adaptation (20%)

Recognizing the growing risks posed by climate change, 20% of our CSR budget is allocated to environmental sustainability and climate resilience initiatives. 50% of this sector's fund has been mandated to use in Climate Risk Fund (CRF).



Others (sports, arts, cultural, Disaster Response) (20%)

20% of our CSR budget is directed toward promoting sports, arts, alongside supporting emergency disaster response, upgrading rescue services and life-saving equipment and improving infrastructure in underserved communities.

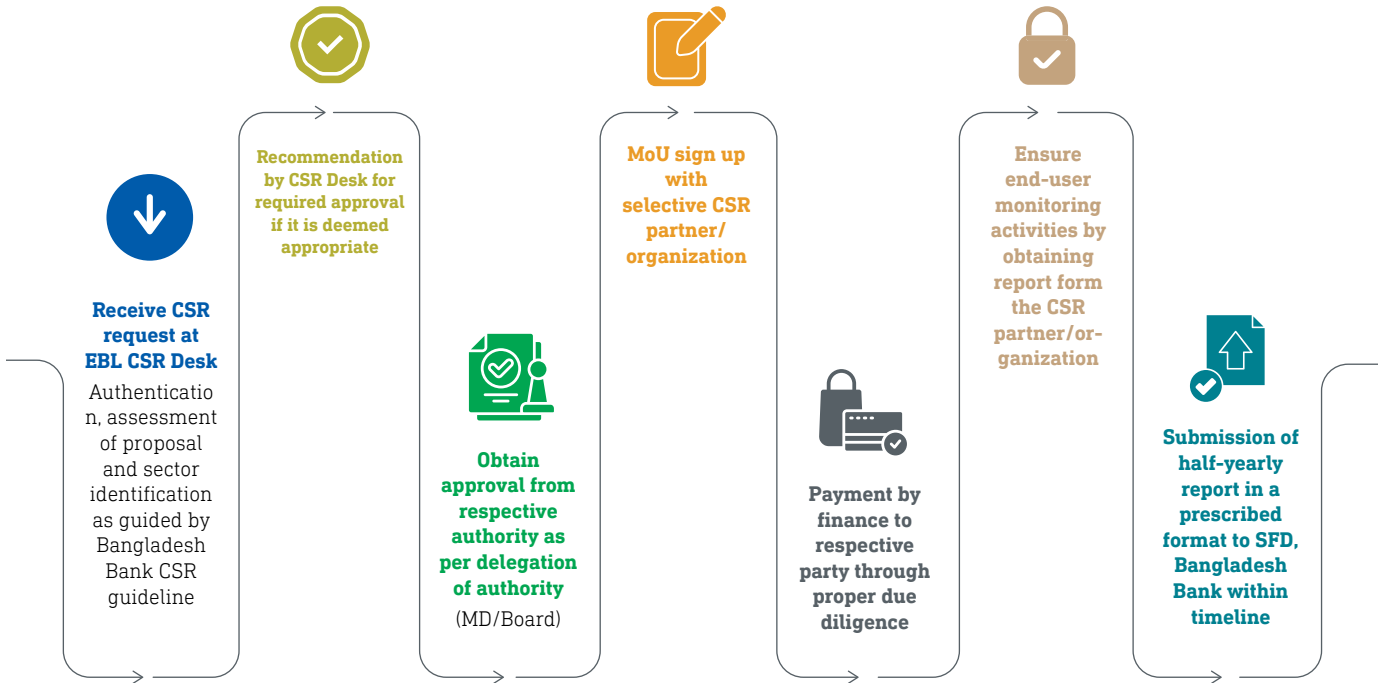
Number of beneficiaries (approx.)

Particulars	2025	2024
Environment and Climate Change Mitigation & Adaptation	1,493,600	62,000
Health	11,843	205,850
Education	5,489	976
Others	92,480	10,648
Total	1,603,412	279,474

CSR initiative framework

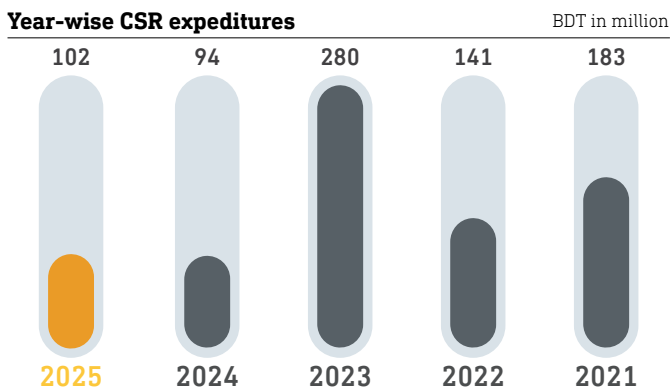
Our comprehensive CSR policy, approved by the Board, ensures that every initiative aligns with our values of integrity and transparency. We are dedicated to maintaining full transparency in our investments, ensuring that every resource is allocated efficiently and effectively to maximize positive social impact.

We adhere to the following steps



Our CSR contributions in last 5 years

In accordance with our Board-approved CSR Policy, EBL allocates 2% of distributed profit annually to CSR initiatives. Consistent with our longstanding commitment to societal well-being, actual CSR expenditures continue to exceed this prescribed allocation. During the year, our contributions were directed across diversified focus areas to ensure meaningful, measurable and sustainable impact for the communities we serve



Our notable CSR partners in 2025





Education: Key to social and economic development



Our CSR initiatives prioritize tertiary education, equipping youth with market-relevant skills, analytical capabilities and critical thinking to bridge the gap between education and employability. By creating pathways to academic advancement and workforce participation, we contribute to economic growth, social mobility and national competitiveness. Through sustained investment in higher education, EBL reaffirms its commitment to inclusive growth and to empowering the next generation to drive Bangladesh's long-term prosperity.

EBL – Dhaka University Alumni Association (DUAA) scholarship

Since 2007, EBL has been on a remarkable and enduring partnership with Dhaka University Alumni Association (DUAA), a collaboration founded on a shared commitment to empowering the bright minds of both meritorious and underprivileged students at the University of Dhaka. This alliance stands as a testament to our unwavering dedication to fostering academic excellence and we take immense pride in the meaningful impact it has had over the years. Through this partnership, we have strived to not only nurture academic brilliance but also to shape a future workforce that is skilled, diverse and ready to meet the challenges of tomorrow.

The selection process for these scholarships is built on a foundation of fairness and transparency. We ensure that every step is handled with the utmost integrity and that the most deserving students are provided with the resources they need to excel. This systematic approach ensures that the impact of our efforts is both profound and lasting. As we look into the future, EBL remains deeply committed to this noble cause. We are confident that the power of education combined with our continued partnership with DUAA will empower countless students to achieve their dreams and contribute meaningfully to the society.



EBL supports 150 meritorious and underprivileged students of Dhaka University

Inception 2007	Departments covered 74
Students Supported 150 meritorious and underprivileged students	Contribution amount BDT 4.50 million
Scholarship Amount BDT 30,000 per student annually	

EBL contributes to Prime Minister's Education Assistance Trust

EBL continues to advance inclusive education through its sustained support to the Prime Minister's Education Assistance Trust. This partnership reflects our alignment with national priorities to expand educational opportunities for students from underprivileged backgrounds across Bangladesh.

In 2025, EBL contributed BDT 4.80 million to the Trust, supporting government efforts to reduce financial barriers to education. The fund provides vital assistance through stipends, tuition support, admission fees and other essential academic expenses, enabling deserving students to pursue their studies without interruption. Through this initiative, EBL reinforces its role as a responsible financial institution by investing in the education of disadvantaged youth, contributing to human capital development, greater social mobility and the nation's long-term socio-economic progress.



EBL donates to Prime Minister's education assistance trust

EBL contributes to the humanitarian initiatives for children with special needs

EBL contributed BDT 2.00 million in 2025 to support the education and overall development of students at Proyash Institute of Special Education. Proyash is dedicated to the holistic development of children with special needs through Inclusive and Equitable Quality Education (IEQE), skill-based training, extracurricular activities, and a range of therapeutic and developmental services. Through this partnership, Proyash is enhancing its critical infrastructure capacity to better serve the growing number of children with special needs.

In addition, EBL extended its support to Dhrobotara Welfare Society, which is engaged in transformative humanitarian initiatives focused on children with special needs, particularly those with autism. This initiative provides tailored care, education, and therapeutic support, helping uplift families while creating pathways for a brighter and more inclusive future.

Through these compassionate efforts, EBL remains committed to fostering inclusive growth and ensuring that no one is left behind in the nation's development journey.

EBL partners with Footsteps Bangladesh to develop learning spaces for special need children

To address the shortage of inclusive and creative learning spaces for children with special needs, Footsteps Bangladesh has launched an initiative to establish two modern "Britto Children Libraries" in selected special schools. EBL has extended its support to Footsteps Bangladesh by providing financial assistance to this project.

Initiative: Transforming underutilized classrooms into vibrant, child-friendly learning environments that nurture curiosity, creativity and a love for reading among children with special needs.

Key Features of the Libraries

- Sensory-friendly furniture and calming interiors designed for comfort and accessibility
- Accessible shelves with curated books and learning materials
- A dedicated sensory zone with approved therapeutic resources
- A structured play area supporting social and cognitive development

Benefits for the children

- Improved literacy and reading habits
- Enhanced creativity and sensory development
- Inclusive access to educational resources for underserved children with special needs.

Contribution amount

BDT 1.50 million



EBL supports Footsteps Bangladesh to develop learning spaces for special need children

EBL supports SOS Children's Village Bangladesh for education and skill development training

In partnership with SOS Children's Villages Bangladesh, for the second consecutive year, EBL continues to empower marginalized youth with employable skills, economic inclusion and sustainable livelihood opportunities, contributing to long-term socio-economic development and greater resilience among underserved communities. This program ensures immediate job placement for all trainees in reputable organizations across Bangladesh, eliminating the risk of post-training unemployment.

Beneficiaries

100 underprivileged youth from disadvantaged backgrounds across Bangladesh

Nature of training

One-year demand-driven vocational training

Course

Across five specialized trades

- Electronics
- Refrigeration & Air-Conditioning
- Automobile
- Electrical
- Machinist

Participants also receive structured financial literacy training to strengthen money management skills and long-term financial resilience.

Contribution Amount

BDT 3.57 million



EBL donates BDT 3.57 million for Education and Skills Development Training



EBL and Bangladesh Business & Disability Network join hands to empower women with disabilities

EBL has committed financial support partnering with Bangladesh Business & Disability Network to enhance entrepreneurial readiness, promote financial independence and advance sustainable economic inclusion for women with disabilities.

Beneficiaries

50 aspiring women entrepreneurs with disabilities

Contribution Amount

BDT 2.57 million

Program Structure

- Two accessible five-day training batches
- Inclusive facilitation with sign language interpretation
- Simplified and accessible learning materials to ensure full participation

Benefits

Participants will receive practical training in

- Digital literacy
- Marketing and pricing strategies
- Basic accounting and financial management
- Business communication
- Understanding gender dynamics in business

Each participant will also develop a business plan and receive post-training toolkits and mentorship support. Upon completion, participants will be connected with the SME Foundation and other financial institutions to facilitate access to financing and business support services.



EBL supports BBDN for training of 50 disabled women

EBL partners with ActionAid Bangladesh for 'Support a Child' Initiative

EBL has been supporting this transformative initiative since 2024 and remains steadfast in its commitment to sustaining and expanding its impact. This continued engagement reinforces the Bank's dedication to empowering underserved communities and advancing equitable access to education, protection and opportunity for marginalized girls across Bangladesh.

Beneficiaries

- 150 girls aged 4–18 from underprivileged families
- Children facing barriers to education and vulnerability to exploitation, violence and child labor

Area

Cox's Bazar, Chanpara, Lalmonirhat, Naogaon and Khilgaon

Contribution amount

BDT 4.5 million

Program Support & Benefits

Participants receive one year of comprehensive assistance which helps to strengthen confidence, resilience and long-term prospects for a safer and more secure future.

- Non-formal education support
- Health awareness and wellbeing guidance
- Life skills development training
- Protection from violence, exploitation and child labor



EBL supports ActionAid Bangladesh for empowering marginalized girls across Bangladesh

EBL Partners with Moner Bondhu to enhance educational access and retention for rural students

Beneficiaries

5,000 students

Key initiatives

- School-based counselling to support students' emotional wellbeing
- Early identification of learning and psychological challenges
- Targeted support for students at risk of dropping out
- Teacher training on inclusive teaching methods and psychosocial first aid
- Parental counselling to strengthen family support for education
- Awareness sessions on child protection and prevention of early marriage
- Life skills training and career guidance for students
- Initiatives designed to enhance classroom engagement and motivation to continue education

Area

10 rural schools across Nilphamari Chor, Rangamati, Madaripur, and Cumilla Chor

Contribution amount

BDT 1.5 million

Program Objective

- Improve educational access and retention among rural students
- Address mental health, learning barriers, and dropout risks
- Foster a more inclusive and supportive learning environment



EBL extends supports to enhance educational access and retention for rural students

EBL Supports Dementia Caregiver Training with Alzheimer Society of Bangladesh

EBL has partnered with the Alzheimer Society of Bangladesh to implement the Dementia Caregiver Training, aimed at improving the quality of life for people living with dementia and their caregivers.

Planned Activities

National Skills Development Authority (NSDA) approved dementia care, level-3 training for 20 individuals.

Program Purpose

- Affordable training opportunities for caregivers from underprivileged backgrounds
- Practical, hands-on training to build caregiving knowledge and competencies
- Training designed for local and international caregivers
- Ensuring accurate and compassionate support for individuals living with dementia
- Improving the well-being and quality of life for both dementia patients and their families.

EBL Implements "Tarunner Utshob – 2025" to Promote Youth Financial Literacy

In alignment with directives from Bangladesh Bank, Eastern Bank PLC. (EBL) successfully implemented "Tarunner Utshob – 2025" (Festival of Youth), a nationwide financial literacy initiative aimed at

empowering young people with essential financial knowledge. The program, launched under the guidance of the Chief Advisor's Office, was conducted from 1–15 September 2025 in coordination with all scheduled banks across Bangladesh.

Through this initiative, EBL organized financial literacy sessions across its branch and sub-branch network in 37 districts, reaching a wide spectrum of young participants. The sessions covered a broad range of topics, including banking products and services, digital financial services, personal financial management and planning, cybersecurity awareness, counterfeit currency detection, loans and investments, entrepreneurial development, and sustainable finance. To support the implementation of the program, EBL allocated BDT 2.5 million, reinforcing its commitment to fostering financial awareness, responsible money management, and informed financial decision-making among the youth.



EBL implements "Tarunner Utshob – 2025"



Healthcare: Essential for community well-being and economic prosperity



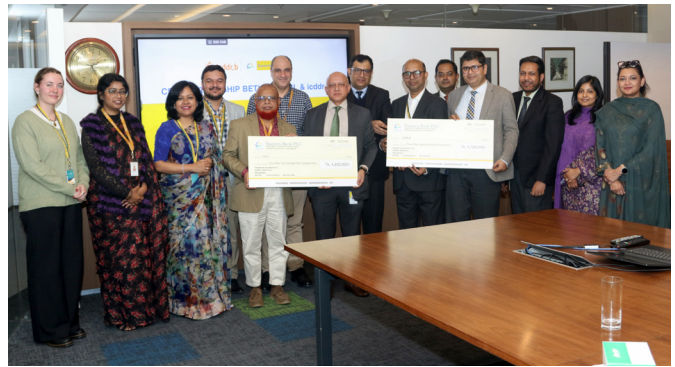
As part of its CSR initiatives, EBL has made meaningful contributions to improving healthcare access for underprivileged communities across Bangladesh. By providing essential medical support, EBL aims to improve access to healthcare, enhance well-being and nurture a healthier future for those in need, which reflects our commitment to social welfare.

EBL supports icddr,b's Matlab Hospital to enhance healthcare for underserved communities

EBL has contributed BDT 4.25 million to support icddr,b's Matlab Hospital, a landmark healthcare and research facility serving rural communities in Bangladesh. Established in 1963 as a cholera research centre, the hospital has evolved into the Matlab Health Research Centre, a comprehensive healthcare institution internationally recognized for pioneering research that has influenced global health policies. Over the decades, the centre has contributed to major public health advancements, including the development and widespread adoption of Oral Rehydration Solution (ORS), Oral Cholera Vaccine, neonatal Tetanus Toxoid, Rotavirus vaccines, and innovative family planning interventions.

With EBL's support, Matlab Hospital will further strengthen healthcare services for underprivileged communities, with a particular focus on newborn care and the Kangaroo Mother Care (KMC) unit. The initiative reflects EBL's commitment to improving

access to quality healthcare, supporting life-saving interventions, and enhancing the well-being of vulnerable populations across Bangladesh.



EBL partners with icddr,b's Matlab Hospital to enhance healthcare for underserved communities

EBL supports Comprehensive Eye Care for Underprivileged Patients

For the second consecutive year, EBL has partnered with Bangladesh Eye-Trust Hospital (BETH) to deliver life-changing vision care to those in need. By enabling access to these critical services, EBL helps restore vision, improve quality of life and create lasting opportunities for individuals who would otherwise be unable to afford care, reflecting the Bank's enduring commitment to healthcare and social welfare.

Beneficiaries

1,200 underprivileged patients

Coverage

Rural and underserved urban communities

Key initiatives

- Eye screening camps to identify patients with vision problems
- Detection of cataract cases requiring surgical intervention
- Cataract surgeries and treatment support
- Comprehensive patient assistance, including:
 - Transportation
 - Food and accommodation
 - Medication during treatment

Contribution amount

BDT 3.00 million

EBL supports injured individuals through July Joddha O Shahid Poribar Shahayata Tahabil

Reaffirming its role as a socially conscious financial institution, EBL has donated BDT 5 million to July Joddha O Shahid Poribar Shahayata Tahabil. Following the guidelines set by Bangladesh Bank, this fund is designed to provide essential medical and financial aid to injured individuals and their families. By contributing to this cause, EBL aims to alleviate the burdens of affected families, reflecting the Bank's enduring dedication to national welfare and community support.

EBL partners with Bangladesh Thalassemia Foundation to enhance life-saving care

In a significant move to support those living with Thalassemia, Eastern Bank PLC. (EBL) has provided BDT 5.65 million for purchase of life-saving blood management equipment. This contribution directly supports Bangladesh Thalassemia Foundation in its mission to serve underprivileged communities. The funding supports the acquisition of a refrigerated centrifuge, platelet incubator with agitator, plasma freezer, and whole blood refrigerator—critical tools for safe blood processing, storage, and transfusion. By modernizing these critical tools, EBL ensures that vulnerable Thalassemia patients receive safe, high-quality medical interventions, reaffirming the Bank's commitment to bridging the healthcare gap for underserved communities.

EBL supports critical healthcare for patients with life-threatening conditions

Eastern Bank PLC. (EBL) has extended vital support to patients facing life-threatening illnesses, including cancer, brain tumors, bone marrow transplants and chronic kidney disease. Recognizing the severe financial burden on affected families, EBL provided direct financial assistance to fifteen critically ill patients who were unable to afford essential medical treatment. EBL also supported Khalil Malik Foundation Dialysis & Diagnostic Center for building Khalil

Malik Cancer & Kidney Center to support Patients with financial need. This initiative underscores EBL's compassionate commitment to healthcare for underserved and vulnerable populations, ensuring

that individuals confronting severe medical challenges receive the care and support necessary to preserve their health and well-being.

EBL partners with Bangladesh Red Crescent Society to improve maternal and child healthcare

EBL and Bangladesh Red Crescent Society partners together for strengthening the rural healthcare backbone of Bangladesh to revitalize and operationalize four Maternal and Child Health (MCH) Centers in medically underserved regions. This initiative expands patient access, promotes sustainable healthcare delivery and exemplifies EBL's dedication to improving health outcomes for vulnerable communities across Bangladesh.

Area

Kishoreganj, Narsingdi, Brahmanbaria, and Dinajpur

Targeted groups

Mother, Child, and Elderly People

Key initiatives

- Infrastructure & utilities: comprehensive renovation, improved sanitation, reliable electricity, and safe water supply
- Medical readiness: provision of essential medical equipment, diagnostic tools, and specialized delivery kits
- Service quality: regular physician support and staffing to ensure consistent, high-standard patient care

Contribution amount

BDT 4.00 million

EBL and Friendship's Mission to the Chars

In the remote river islands (Chars) of northern Bangladesh, specialized healthcare is often a distant dream. In 2025, EBL has partnered with Friendship, a leading NGO in Bangladesh, to expand access to essential healthcare for these vulnerable communities.

Friendship plays an instrumental role in humanitarian service through its unique fleet of floating hospitals. Under Friendship's Char Surgery Access Program, the partnership will bring specialist surgical care to isolated river island communities in northern Bangladesh.

Objective

1,000+ specialized surgeries such as such as cataract surgeries, burn contracture repair, prolapse correction, Achilles' tendon surgery, and other essential general surgeries.

Area

Northern Bangladesh (River Island Communities)

Delivery Channels

Floating hospitals, satellite clinics & medic-aides

Contribution amount

BDT 4.60 million

By bringing specialized care directly to these communities, the initiative eliminates the need for residents to travel hundreds of kilometers to urban centers for treatment.



EBL partners with Friendship to expand access to essential healthcare for vulnerable communities in Bangladesh

Environment and climate change mitigation & adaptation



Environment and climate change mitigation & adaptation initiative under CSR expenditures represents a proactive commitment to addressing the urgent challenges posed by environmental degradation and climate change. Through targeted investments and actions, this initiative underscores a dedication to creating a sustainable, eco-friendly future while contributing to global climate change goals.

EBL Partners with NKFTCL for coastal forestation and embankment rehabilitation on Bhasanchar island

EBL, in partnership with Nou Kollan Foundation Trading Company Limited (NKFTCL), has extended its support to the Ashrayan-3 Project, led by the Bangladesh Navy, to strengthen environmental sustainability and climate resilience on Bhasanchar Island—spanning approximately 65 square kilometers.

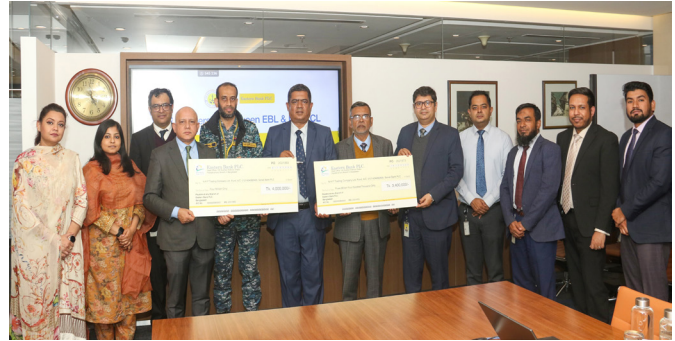
As part of this multi-year initiative, EBL contributed a total of BDT 7.40 million (BDT 4.0 million for tree plantation and BDT 3.40 million for embankment rehabilitation) to support both coastal forestation and infrastructure strengthening efforts. The program has played a key role in transforming the island into a more livable and environmentally resilient habitat.



The initiative began with a large-scale tree plantation drive, including mangrove and other species, supported by comprehensive post-plantation care to ensure long-term ecological sustainability. Building on this foundation, the current phase focuses on the rehabilitation and strengthening of embankments, which are critical to protecting both the environment and the community.

Key interventions

- Restoration of eroded embankment areas and reinforcement around tree roots
- Soil stabilization to prevent further degradation and protect vegetation
- Protection of plantations from erosion and waterlogging
- Ensuring the structural integrity of embankments for long-term resilience
- Through this integrated approach, EBL reinforces its commitment to ecological restoration, disaster risk reduction, and sustainable development, contributing to the long-term well-being of vulnerable coastal communities in Bangladesh.



EBL contributes BDT 7.40 million to NKFTCL for coastal forestation and embankment rehabilitation

EBL partners with Friendship to deliver safe drinking water in coastal Bangladesh

To strengthen EBL's commitment to improving public health, enhancing community resilience and ensuring sustainable access to safe drinking water for vulnerable populations, we have partnered with Friendship in 2025.

Location

Southern coastal Bangladesh (cyclone- and salinity-prone areas)

Project initiatives

- Installation of 2 multi-source Water Treatment Plants (WTPs)
- Each WTP serves approximately 400 families
- Total beneficiaries: 800 families

Capacity

1,000 liters/hour per plant

Benefits

- Ensures safe and reliable drinking water
- Reduces waterborne diseases
- Addresses chronic water scarcity & salinity intrusion
- Supports areas with damaged polders & tube wells

Contribution amount

BDT 4.60 million

EBL Partners with Prokriti O Jibon for Mangrove Restoration to Strengthen Climate Resilience

We have contributed BDT 3.00 million to support the Mangrove Restoration for Climate Resilience (MRCR) Project in the Sundarbans coastal areas of southeastern Bangladesh (Satkhira district and adjacent areas). Implemented in partnership with Prokriti O Jibon

Foundation, the initiative aims to enhance coastal ecosystem protection while strengthening community resilience to climate change.

The project focuses on the plantation and distribution of mangrove, fruit-bearing, forestry, and medicinal saplings, supported by comprehensive post-plantation care to ensure sustainability and long-term ecological impact. In addition, community awareness sessions are conducted to encourage environmental stewardship and promote climate resilience among local residents. Through this initiative, EBL reaffirms its commitment to environmental sustainability, disaster risk mitigation, and the long-term well-being of vulnerable coastal communities in Bangladesh.

EBL partners with icddr,b to advance sustainable bio hazardous waste management (phase III)

EBL has continued its partnership with icddr,b to strengthen sustainable and environment-friendly healthcare waste management practices across Bangladesh. Initiated in 2023, this trailblazing program aims to improve the safe handling and disposal of bio hazardous waste in medical facilities. In 2025, EBL contributed BDT 3.70 million to support Phase III of the Best Practices in Sustainable Solid Bio hazardous Waste Management project, marking the third consecutive year of collaboration. This phase expands the initiative beyond Dhaka to seven divisional medical colleges and one specialized tropical and infectious disease institute nationwide.

Leveraging icddr,b's Biosafety Level 2 laboratories, the project will conduct assessments of existing waste management practices across participating institutions. Based on these findings, the program will provide essential packaging materials and deliver comprehensive theoretical and hands-on training to healthcare staff. A structured four-month follow-up evaluation will ensure the effective adoption and sustainability of best practices.

Through this initiative, EBL reinforces its commitment to public health, sustainable healthcare systems, and capacity building in medical institutions, contributing to safer and more resilient healthcare environments across Bangladesh.

EBL supports clean water access for vulnerable coastal communities

EBL has contributed BDT 6.10 million to support a Clean Water Program aimed at addressing acute water scarcity and contamination in southwestern Bangladesh. The initiative focuses on Dumuria and Botiaghata in Khulna District, and Bagerhat Sadar, areas severely affected by declining groundwater levels, salinity intrusion, arsenic contamination, and climate-induced droughts. According to the Department of Public Health Engineering (DPHE), nearly 80% of tube wells in Botiaghata are currently non-functional, highlighting the urgency of sustainable water solutions.

Under this program, 16 deep tube wells (950–1,200 feet) will be installed, each equipped with submersible pumps, water storage tanks, and solar-powered systems to ensure consistent access to safe drinking water, even in locations with limited electricity. Designed for accessibility and ease of use, particularly for children and elderly community members, each unit will serve 15–20 families (approximately 75–100 individuals). Implemented in partnership with the SOS Children’s Villages Bangladesh Khulna Center, the initiative aims to strengthen community resilience, improve public health, and enhance the overall well-being of underserved coastal populations, reflecting EBL’s continued commitment to inclusive and sustainable development.

EBL Supports Community Tree Plantation Initiative by “Gacher Bondhu” Badsha Mia

EBL has extended support to Badsha Mia, widely known as “Gacher Bondhu”, for his inspiring grassroots efforts in tree plantation

and environmental stewardship in Pirganj, Rangpur. Despite being a day laborer, Badsha Mia has consistently nurtured and planted trees on his own initiative, demonstrating an exceptional commitment to ecological conservation and community well-being without expectation of reward. Through this support, EBL is helping to expand his tree plantation activities, further strengthening local green cover and promoting environmental awareness. The initiative reflects EBL’s commitment to community-led sustainability, climate action, and the encouragement of environmentally responsible practices among underserved communities.



EBL supports Gacher Bondhu Badsha Mia for expanding his tree plantation activities

Environment-Friendly Banking at EBL

Commitment to sustainability

- Environmental stewardship & green operations
- Long-term impact through sustainable practices

Go Green initiative

- Reduced electricity & paper consumption
- Lowered operational carbon footprint
- Eco-friendly workplace culture

Go Green Plus initiative

- Partnered with DHL
- 30% Emission reduction in trade document transport
- Aligned with sustainability goals

Renewable energy & green infrastructure

- Solar-Powered branches & ATMs
- Sustainable head office
- Solar energy
- Water treatment
- Rainwater harvesting

Impact & leadership

- Renewable energy solutions
- Leader in sustainable banking
- Towards a greener Bangladesh



EBL's commitment to social responsibility: supporting communities, sports, and cultural activities



EBL has actively supported a range of social and national initiatives, reflecting its commitment to corporate social responsibility and inclusive development. Key contributions include support to the Chief Advisor's Relief Fund for winter-affected communities and initiatives promoting Bangla QR, among other efforts.

EBL extends winter assistance to the Chief Adviser's Office and vulnerable communities nationwide

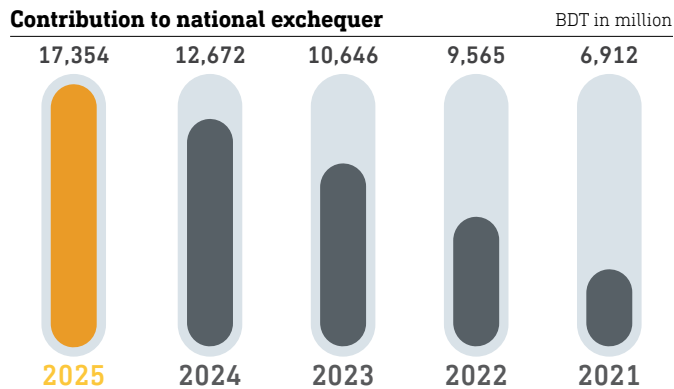
EBL has extended winter support to vulnerable communities across Bangladesh, recognizing the severe hardships caused by extreme cold conditions. As part of this initiative, EBL contributed 50,000 blankets through the Chief Adviser's Office, helping ensure warmth and comfort for those most in need. Moreover, the Bank directly distributed blankets to various organizations, including madrasas and underserved communities across Tangail, Dinajpur, and Rangpur. This effort reflects EBL's continued commitment to supporting vulnerable populations, promoting social well-being, and responding to seasonal humanitarian needs across the country.

EBL contributes to July Joddha O Shahid Poribar Shahayata Tahabil in support of martyrs' families

We extended financial support of BDT 5.00 million to the July Joddha O Shahid Poribar Shahayata Tahabil to assist the families of martyrs as our commitment to standing beside the bereaved families through meaningful and timely support.

Contribution to national exchequer

As a responsible corporate citizen, EBL consistently fulfills its tax obligations promptly, often ahead of statutory deadlines. The Bank ensures the timely deposit of withheld taxes and VAT, deducted from employee salaries and payments to customers and vendors, into the government exchequer, reflecting its commitment to regulatory compliance, transparency and national development.



EBL Women Banking: advancing financial inclusion and women's economic empowerment

EBL continues to evolve its Women Banking initiative beyond traditional financial services, positioning it as a dynamic platform for financial

literacy, capacity building, and economic empowerment of women. In 2025, the program deepened its impact through structured interventions and strategic partnerships aimed at increasing women's participation in the economy.

A key milestone was the first-ever Women Entrepreneurship Development Summit, which brought together women chambers and business associations from across the country to foster collaboration, networking, and knowledge exchange. The launch of "Adita", the second phase of our flagship Entrepreneur Development Program, further strengthened financial awareness and business capacity development.

EBL Women Banking also partnered with organizations including the Chittagong Women Chamber of Commerce & Industry (CWCCI), Truvalu, SEED Foundation, and Women Entrepreneurs Association of Bangladesh (WEAB) across multiple cities to promote entrepreneurship and skills development.

Engagements during Global Entrepreneurship Week 2025 and Women's Entrepreneurship Day, in collaboration with Bangladesh Cancer Aid Trust (BANCAT), included a joint virtual session with CWCCI on "Financial Literacy for Women Entrepreneurs." Additional initiatives, such as partnerships with Shikho, nationwide branch-based Access to Finance training, and support for the Undergraduate Startup Challenge at BRAC University further reinforced EBL's commitment to inclusive, sustainable growth and women's empowerment across Bangladesh.

EBL Women Banking's initiative in 2025	Number
Number of Trainings Organized	7
Number of Events Organized	11
Branch Based Access to Finance Training (Participants)	1,103



CWCCI and EBL collaborate to empower women entrepreneurs

Way forward

- We are committed to drive positive and lasting impacts through strategic initiatives spanning education, healthcare, environmental sustainability, climate change mitigation and adaptation, sports and culture, disaster management and women's empowerment. These efforts are guided by our unwavering commitment to sustainability and inclusive development.
- In times of national crisis, we proactively extend timely and targeted support to ensure meaningful assistance reaches the communities most in need.
- We remain steadfast in our dedication to empowering underprivileged and marginalized communities, fostering socio-economic advancement and contributing to the sustainable progress of society at large.