



**CORPORATE
SOCIAL
RESPONSIBILITY**

CSR Highlights 2024

Funded NKFTCL **BDT 3.80 million** to support coastal forestation and tree plantation.



Provided support **South-Asian Disability Arts Festival 2024**



Contributed **BDT 3.50 million** to iccdr,b for sustainable solid bio hazardous waste management.



Contributed **BDT 5.70 million** to iccdr,b for water purification project at salinity prone area.



Donated **50,000+** blanket to the Cold affected underprivileged people.



Funded SOS childred village of **BDT 3.38 million** for education and skill development training.

Funded SOS children village of **BDT 3 million** for health & medical care for the underprivileged.



Contributed **BDT 3 million** to Actionaid Bangladesh for educational support for girls.

Funded **550** student banking package to Dhirasrom School students.



Contributed **BDT 1.91 million** to BBDN for supporting disabled women.

Funded Dhruvotara welfare society for humanitarian initiative for children with special need.





Contributed **BDT 6.10 million** to Shishu Sasthya Foundation for in-patient services.



Donated **BDT 2.50 million** for football tournament.

Contributed **BDT 4.50 million** to Dhaka University Scholarship Program.



Collaborated with PUM & Trinamul Nari Uddyakta Society to arrange training for women entrepreneurs.



Funded Bangladesh Eye-Trust Hospital **BDT 4 million** for eye care support to underprivileged people.



Contributed **BDT 30 million** to Chief Adviser's Relief and Welfare Fund for flood effected people of Bangladesh.



Celebrated World environment Day by taking tree plantation initiatives.

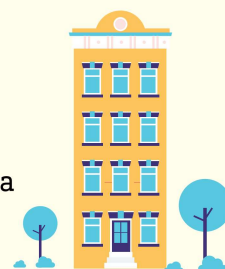


Arranged drinking water bottle distribution to the community during heatwave.

Contributed **BDT 10 million** to Kabbadi Federation to arrange Kabbadi tournament.



Contributed **BDT 1 million** to Chayatal Bangladesh to build a school & hostel for street children.



Contributed **BDT 1 million** to BEZA for setting up BIDA daycare center.





Corporate Social Responsibility

At EBL, we are committed to responsible and ethical banking guided by our core values. We aspire to lead through values-based leadership, embedding environmental and social considerations into all our practices and processes. Through our Corporate Social Responsibility (CSR) initiatives, we aim to improve the lives of people of the community we operate in and uphold our responsibility as a corporate citizen.

Our commitment to sustainability is deeply integrated into our business model with a focus on making a lasting impact on the communities we serve. This is reflected in our alignment with the United Nations Global Compact principles, a widely recognized standard for corporate social responsibility. Our goal is not only to contribute to a thriving, sustainable world but to leave behind a legacy that ensures a better world for our future generations.

Corporate citizenship strategy

We integrate responsible banking values into our corporate citizenship programs, prioritizing initiatives that positively impact vulnerable groups and sectors. Guided by sound governance and regulatory policies our robust monitoring processes ensure that every taka spent reaches marginalized communities. Aligned with Bangladesh Bank Sustainable Finance Department's (SFD) Circulars (No. 01/2022 and No. 05/2023) we have established a comprehensive CSR policy.

CSR strategy



We exercise the highest level of diligence to ensure that our CSR allocations are directed solely toward initiatives that foster positive social impact, safeguarding against any potential misuse for financing militancy or terrorism.



Our CSR initiatives primarily focus on advancing education and healthcare. We are committed to allocating 30% of our funds towards providing scholarships for underprivileged students to attend esteemed educational institutions and another 30% to enhance healthcare services for underserved communities, ensuring access to essential care for those in need.



We allocate 20% of our CSR budget to the environment and climate change mitigation & adaptation sector, underscoring our commitment to fostering a sustainable, greener, and more resilient future.



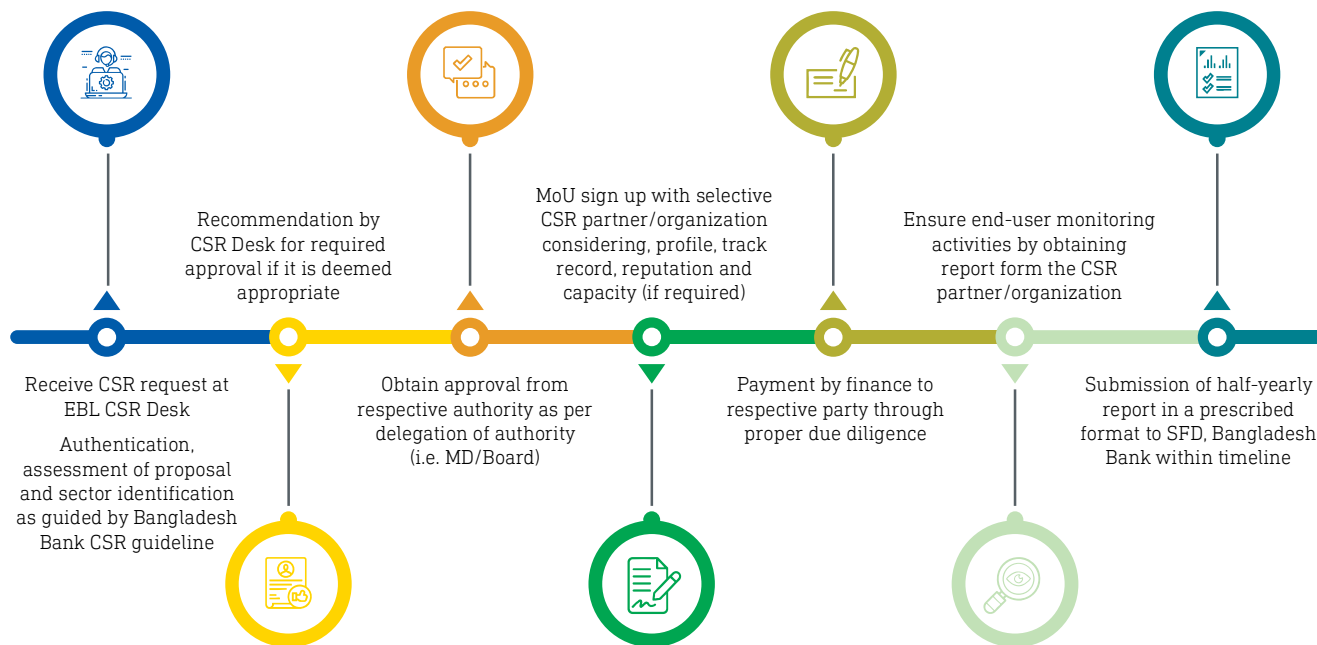
We believe that sports, arts and culture are essential to a healthy, sustainable society. Consequently, we allocated 20% of our CSR budget to support the development of these sectors alongside funding for emergency disaster relief, upgrading rescue services and life-saving equipment, and enhancing infrastructure in underserved communities.

Our major CSR activity areas



CSR initiative framework

Our comprehensive CSR policy, approved by the Board, ensures that every initiative aligns with our values of integrity and transparency. We are dedicated to maintaining full transparency in our investments, ensuring that every resource is allocated efficiently and effectively to maximize positive social impact. We adhere to the following steps:



Our CSR contributions in last 5 years

As per our Board-approved policy, 2% of the distributed profit is allocated annually to CSR expenditures. However, our actual expenditures consistently exceed this allocation, reflecting our strong commitment to societal well-being. This year our contribution has been made into diversified fields ensuring meaningful impacts.

Particulars	BDT in million				
	2024	2023	2022	2021	2020
CSR expenditure	94	280	141	183	183

Education: Key to social and economic development



Our CSR initiatives focus on tertiary education, equipping youth with the skills needed for the workforce and nurturing critical thinking. By creating pathways to education and employment, we strive to empower the next generation, support economic development, and contribute to social cohesion. We are deeply committed to supporting education as a cornerstone of both personal and societal growth.

EBL provides study material package to Dhirasrom Government Primary School, Gazipur

EBL remains profoundly committed to the advancement of education as a catalyst for national development. Recognizing the transformative power of education, EBL has dedicated its resources to support Dhirasrom Government Primary School located in Gazipur. By providing 550 students with note books, pens, pencils and other essential educational items, EBL has helped to eliminate financial barriers for underprivileged students from low-income families and has ensured their continued easy access to education. This initiative not only promotes educational continuity but also empowers these students to pursue their academic goals without any hindrance.



EBL provides study materials to the students of Dhirasrom Govt. Primary School

EBL – Dhaka University Alumni Association (DUAA) scholarship

Since 2007, EBL has embarked on a remarkable and enduring partnership with the Dhaka University Alumni Association (DUAA), a collaboration founded on a shared commitment to empowering the bright minds of both meritorious and underprivileged students at the University of Dhaka. This alliance stands as a testament to our unwavering dedication to fostering academic excellence and we take immense pride in the meaningful impact it has had over the years.

What began as a modest initiative, offering a minimum of four scholarships across 74 departments of the University of Dhaka, has evolved into a far-reaching program that has provided countless opportunities for students to pursue higher education. Through this partnership, we have strived to not only nurture academic brilliance but also to shape a future workforce that is skilled, diverse and ready to meet the challenges of tomorrow.

In 2024, EBL contributed a total of BDT 4.50 million to fund the education of 150 deserving students with each recipient awarded BDT 30,000 annually. The selection process for these scholarships is built on a foundation of fairness and transparency. We ensure that every step is handled with the utmost integrity and that the most deserving students are provided with the resources they need to excel. This systematic approach ensures that the impact of our efforts is both profound and lasting.

As we look into the future, EBL remains deeply committed to this noble cause. We are confident that the power of education combined with our continued partnership with DUAA will empower countless students to achieve their dreams and contribute meaningfully to the society.

EBL contributes to Chayatal Bangladesh to establish school and hostel for street children

EBL selectively provides necessary funding support to the institutions and initiatives that is able create long lasting impact in the society. Keeping that spirit, EBL has pledged BDT 1.00 million to Chayatal Bangladesh to establish a school and hostel dedicated to street children. This generous contribution aims to provide a safe and nurturing environment where the marginalized children can access to quality education and shelter.

EBL partners SOS Children’s Village Bangladesh for education and skill development training

EBL has proudly extended its support to SOS Children’s Village Bangladesh contributing BDT 3.38 million to fund an impactful education and skill development initiative. This initiative provides demand-based, one-year vocational training for 100 underprivileged youth in five specialized trade courses: electronics, refrigeration & air-conditioning, automobile, electrical and machinist.

In addition to technical expertise, the program includes a financial literacy component that empowers the participants with crucial life skills. Remarkably, all trainees benefit from immediate job placements in prominent organizations across Bangladesh as well as ensures that no one faces unemployment after completing their training.



EBL donates BDT 3.38 million for education and skill development training

EBL contributes to the humanitarian initiatives for children with special needs

EBL contributed to Dhrubotara Welfare Society involved in transformative humanitarian initiative aimed at supporting children with special needs, particularly those with autism. This initiative helps to provides tailored care, education and therapeutic support where these children can thrive in an inclusive environment. Through this compassionate effort, Dhrubotara Welfare Society is helping to uplift families and create opportunities for a brighter and more inclusive future.

EBL and Bangladesh Business and Disability Network join hands to empower women with disabilities

This initiative led by EBL focuses on empowering 15 disabled women from underserved areas in the Dhaka division. The training framework is designed keeping in mind the market demands which offers both basic and advanced skills including data entry, web research, e-mail communication, social media management, programming (Python, Java, C++), digital marketing, SEO and data analytics (Tableau, Power BI).

Emphasizing inclusive learning, the program provides tailored support for marginalized learners with disabilities such as screen readers for visually impaired participants, sign language interpreters for the hearing-impaired and customized schedules for neurodiverse individuals. This program aims to build their confidence and open doors to meaningful careers in the technology-driven world.



EBL donates BDT 1.91 million for training of 15 disabled women

Partnership between EBL & AAIBS

EBL, in collaboration with ActionAid International Bangladesh Society, is extending its support to 100 marginalized girls from Cox's Bazar (45), Chanpara (30), and Lalmonirhat (25) through ActionAid's "Support a Child" initiative—ensuring they grow up in an environment where hope thrives, dreams take shape, and opportunities unfold.

These girls, vulnerable to exploitation, violence and child labor due to socio-economic disparities, will receive one year of comprehensive support. The initiative focuses on ensuring access to education, fostering cognitive and social skills development and creating a safe, nurturing environment for these young girls. EBL's involvement in this partnership underscores its commitment to breaking the cycle of poverty and empowering the next generation of girls to achieve their full potential.



For over 40 years, ActionAid has been committed to creating spaces in Bangladesh where children, especially girls from at-risk backgrounds, can explore their potential, access knowledge, and build the confidence to rewrite their futures. Through ActionAid's "Support A Child" initiative, these young minds receive the care, guidance, and resources needed to navigate life's challenges and aspire beyond societal barriers.

EBL has contributed BDT 3.00 million to strengthen this journey, ensuring that these girls are not held back by circumstances but propelled forward by possibilities. By aiding access to learning, emotional well-being, and a nurturing community, this initiative helps them grow with dignity, resilience, and the courage to dream big.

Together, EBL and AAIBS are shaping a world where every girl has the chance to rise, find her voice, and carve her own path for a better future.

Healthcare: essential for community well-being and economic prosperity



As part of Corporate Social Responsibility (CSR) initiatives, EBL has made significant contributions to the healthcare of underprivileged communities. By providing essential medical support, EBL aims to improve access to healthcare, enhance well-being and nurture a healthier future for those in need, which reflects our commitment to social welfare.

EBL funds SOS Children's Village Bangladesh for providing health and medical care for the underprivileged

SOS Children's Villages Bangladesh, part of the global SOS Children's Village International network, has been a beacon of hope for the

vulnerable children since 1972. Operating across six SOS villages and various programs in Dhaka, Rajshahi, Khulna, Chattogram, Bogura, Bagerhat and Sylhet, it offers essential care for orphaned, underprivileged and at-risk children and youth.

Through this project, SOS aims to provide comprehensive medical care for 1,000 children, youths and students for one year. The initiative will cover vaccinations, regular health check-ups and necessary treatments. EBL has contributed BDT 3.00 million in this project to ensure that these children receive the vital medical attention which is necessary to lead healthy and fulfilling lives.



EBL funds to strengthen in-patient services at Shishu Sasthya Foundation

To enhance the quality of care for underprivileged and marginalized children, EBL has donated BDT 6.10 million to strengthening in-patient services at "Dr. M R Khan Shishu Hospital and Institute of Child Health" under Shishu Sasthya Foundation, Bangladesh.

This comprehensive initiative includes extensive renovations of two dedicated wards, upgrading nursing stations and improving patient beds and their accessories. Additionally, the project will supply and install state-of-the-art medical instruments, equipment and machinery, along with an advanced oxygen system.

The hospital's expanded capacity will now feature 30 beds—22 for pediatric medicine and 8 for pediatric surgery that aims to provide vital healthcare services to 2,400 in-patients annually. Through this partnership, EBL reaffirms its social commitment to improving

healthcare access for vulnerable children as well as ensuring that they receive the highest standard of care in a safe and well-equipped environment.



EBL donates BDT 6.10 million to Shishu Sasthya Foundation

EBL partners with Moner Bondhu Limited to offer free mental health care services to RMG workers

Confident mental health plays a key role in ensuring overall well-being and productivity, particularly for women workers in the Ready-Made Garments (RMG) sector. Recognizing this, Eastern Bank PLC in partnership with Moner Bondhu, launched a corporate social initiative to provide free mental health and well-being services to over 5,000 women in the RMG industry where the project area was covered in Dhaka, Gazipur and Savar. Initially, 200 RMG workers participated in two mental health awareness sessions designed to increase awareness among them.



EBL extends support to providing free mental health care services to RMG workers



Session arranged for mental health awareness among RMG workers

EBL contributes to Bangladesh Eye-Trust Hospital to provide comprehensive eye care to underprivileged patient

This project aims to deliver comprehensive eye care to 1,600 underprivileged individuals, particularly those in rural and underserved urban areas. The project included conducting eye screening camps, identifying cataract patients in need of surgery and addressing all logistic requirements, including transportation, food, medication, and lodging during the treatment process.

EBL has generously contributed BDT 4.00 million to support this vital initiative. This initiative will significantly enhance the quality of life for these individuals by restoring eye-sight.

EBL funds for providing assistance to the critically ill underprivileged people

EBL has extended vital support to critically ill patients in dire need of medical treatment, showing compassion for those facing hardship. Recognizing the immense financial burden on families, EBL provided financial assistance to patients unable to afford ongoing treatment.

The Bank funded the treatment for six critical patients suffering from cancer, brain tumors, and chronic kidney disease. This initiative has helped improve the lives of these critically ill patients facing life-threatening health challenges by enabling access to care for.

Environment and climate change mitigation & adaptation



Environment and climate change mitigation & adaptation initiative under CSR expenditures represents a proactive commitment to addressing the urgent challenges posed by environmental degradation and climate change. Through targeted investments

and actions, this initiative underscores a dedication to creating a sustainable, eco-friendly future while contributing to global climate change goals.

EBL partners with icddr,b for solid bio-hazardous waste management project and reverse osmosis

EBL and internationally reputed research organization and hospital icddr,b entered into a collaborative partnership to support its initiatives of solid bio-hazardous waste management and reverse osmosis first in 2023. The collaboration grew into other initiatives in 2024: purified water for salinity prone areas.

Best Practices in Sustainable Solid Bio Hazardous Waste Management Phase-1

EBL and icddr,b joined partnership in a trailblazing initiative to improve healthcare waste management through sustainable and environment-friendly practices in January 2024.

Previously, icddr,b was incinerating the entire solid biohazardous waste stream through a contracted vendor until April 2024. The majority of the solid biohazardous waste, generated in all the healthcare facilities, are contaminated polymers (plastic or rubber) materials with biological hazards. For complete destruction of the polymer materials and to stop its reuse, incineration is one way. As incineration involves high price as well as is burning value, icddr,b initiated best practices in sustainable solid biohazardous waste management and accordingly minimized the incineration cost, significantly reduced incineration, and initiated recycling of plastic materials through plastic recycling facilities.

EBL initially contributed BDT 3.20 million in 2023 to icddr,b to set up an advanced solid biohazardous waste treatment facility. The facility will be equipped with advanced waste sterilizers and shredders, enabling the full decontamination and destruction of biohazardous polymer materials.

Biosafety Office of icddr,b has completed rigorous monitoring of icddr,b's solid biohazardous waste management, starting from waste generation, proper segregation that follow transportation of the segregated and properly packaged solid wastes, with/without on-site treatment from the temporary storage area to the biomedical waste treatment facility, for off-site treatment and final disposal. Accordingly, icddr,b has established best practices in sustainable solid biohazardous waste management in its premises starting from March to December in 2024.



EBL partners with icddr,b for sustainable healthcare waste management

Best Practices in Sustainable Solid Bio Hazardous Waste Management Phase-2

In 2024, EBL has extended its support to a second phase of the Best Practices in Sustainable Solid Biohazardous Waste Management initiative at icddr,b by contributing BDT 3.50 million to the project. This phase will enhance waste treatment capacity at icddr,b by introducing advanced sterilization technology and providing training to key healthcare facilities in Dhaka. The program also aims to align national healthcare waste management policies with sustainable practices, ensuring a more environment-friendly and resilient healthcare system. Dr Asadulghani, Head of the Biosafety, Biorepository, and Containment Lab at icddr,b, will lead the implementation of this project.



Established waste autoclave facility (Left); waste converted to asset after sterilization (Right)



A seminar on "Best Practices in Sustainable Solid Biohazardous Waste Management" was held on 11 November 2024 organised by icddr,b's Biosafety Office

The implementation of the project activity supported by EBL has minimized incineration and maximized recycling of 20% of the decontaminated polymer materials which is converted to asset. At the same time, a dedicated sterilization facility for waste management will help them to autoclave almost all the solid biohazardous waste, ensuring control of unintentional spread of infectious organisms from untreated biological waste while transporting. Until now, icddr,b and the neighboring community have definitely benefited from this project.

The real impact will be evident when the Government facilities are aware of the updates on the new guidelines and the concerned key personnel from each facility are trained properly. With the full rollout of this project, Government facilities will be equipped to adopt sustainable best practices in line with the guidelines. Further support from government and non-government partners will be required to fill-up the gaps that are identified through the assessment procedures for full implementation of sustainable best practices.

The partnership also includes developing and updating icddr,b's policies and SOPs in line with sustainable practices. The project aims to promote similar initiatives across Bangladesh, with icddr,b hosting workshops and seminars to share its expertise in sustainable waste management with healthcare leaders and government officials. Through such endeavors, EBL stays true to its values in making true impacts in achieving environmentally sustainable society.

Turning the Tide: Safe Drinking Water Brings Hope to Salinity-Stricken Families in Coastal Bangladesh

EBL has also pledged its support to icddr,b's new initiative, "Purified Water for Salinity-Prone Areas: Overcoming Water Scarcity Challenges in Coastal Bangladesh." This initiative will establish a reverse osmosis (RO) water treatment plant in Shyamnagar, Satkhira, one of the most salinity-affected regions in the country, to provide clean drinking water to 200 households. The project also includes a research component, where the blood pressure and urinary sodium levels of participants will be measured before the intervention and at 6-month and 12-month intervals afterward to evaluate the health impact of purified water.

Shyamnagar, Satkhira – For years, the families of this coastal region have battled with an invisible yet relentless enemy—salinity intrusion. With freshwater sources increasingly contaminated, the simple act of drinking water has become a daily struggle, threatening both their health and livelihoods. Increased blood pressure, kidney diseases, skin diseases and diarrhea has become more prevalent in the last decade alongside increases in salinity of drinking water.

"We had no choice but to drink salty water. I have to walk for 30 minutes to buy fresh water from the market which is often not possible. My children often fell sick, and my husband's health keep deteriorating. We knew it was the water, but what could we do?" says Hasina Begum, a mother of three, her voice heavy with years of hardship.

Now, a transformative initiative is bringing relief to 1,200 people in Datinakhali union of Shyamnagar. Environmental Health and WASH team of icddr,b is establishing a Reverse Osmosis (RO) water purification plant that will be providing families with clean and safe drinking water. RO-based desalination plants are being advocated as a climate-resilient option by both government and non-government organizations in response to the need for a long-term solution in southwest coastal Bangladesh.

For many, this intervention is life-changing. *"I feel hopeful that my children will grow up drinking fresh water, there is nothing more satisfactory to us than drinking a glass of fresh water,"* says Rashidul Islam, a local fisherman.

This project aims to reduce salinity-related health risks, particularly high blood pressure and kidney health, by supplying purified water and assessing its impact on community health through a rigorous scientific assessment. Evidence generated from this project will also help to project the health benefits over cost to policy makers and encourage future investment in safe drinking water in coastal Bangladesh.

Beyond health benefits, the project will explore the economic and social feasibility of scaling up RO-based water supply models in other climate-vulnerable regions. Community engagement through surveys, interviews, and water quality testing ensures that this initiative is not just a short-term solution but a sustainable model for the future.

By aligning with Sustainable Development Goal 6 (SDG-6)—ensuring clean water and sanitation for all—this initiative is more than a local intervention; it is a beacon of hope for communities for all the coastal regions facing the dire consequences of climate-induced salinity intrusion.

EBL believes in pushing the boundaries of traditional corporate responsibility. And hence, supporting such initiatives where environmental sustainability meets public health. EBL does not just invest in projects; in fact, we invest in the future of the communities.



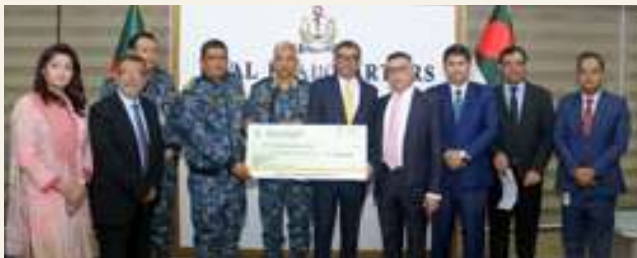
EBL Provides Water Bottle Distribution during 2024 Heat Wave

In response to the scorching heat wave of summer 2024, EBL took proactive measures to support the communities in Dhaka and

Chattogram by distributing water bottles. This initiative was aimed at alleviating the discomfort caused by extreme temperatures, ensuring hydration and well-being for individuals working in the heat. Through this effort, EBL was able to contribute to the social welfare and provide some relief to the people during heatwaves.

EBL partners with NKFTCL for coastal forestation and tree plantation on Bhasanchar Island

EBL took initiative for coastal forestation and tree plantation on Bhasanchar Island in a collaboration with Nou Kollan Foundation Trading Company Limited (NKFTCL), Bangladesh Navy. This project represents a significant step towards environmental restoration and coastal protection focusing on planting a variety of trees that serve multiple purposes. A diverse range of fruit-bearing, medicinal and environment-friendly trees will be planted to strengthen the coastal belt that will enhance biodiversity and improve the ecological balance of the area.



EBL contributes BDT 3.80 million for coastal forestation and the plantation program

This tree plantation project is not merely an act of planting trees, it includes a detailed post-plantation care program to ensure the long-term growth and sustainability of these trees. Regular monitoring, soil enrichment and other support mechanisms will be in place to maximize the environmental impact of this initiative. By promoting the growth of such diverse species, the project aims to mitigate soil erosion, provide resources for local communities and improve the resilience of Bhasanchar Island's ecosystem against the impacts of climate change.

EBL's commitment to social responsibility: supporting communities, sports, and cultural activities



EBL has made significant contributions to various cause including Relief Fund for flood affected and winter-affected communities, supporting sports initiatives, promoting Bangla QR, and South Asian Disability Arts Festival.

EBL contributes to Chief Adviser's relief and welfare fund for flood victims and winter aid for affected people

As part of its ongoing commitment to social responsibility, EBL has made a significant contribution to the Chief Adviser's Relief and Welfare Fund, providing crucial support to those affected by the devastating floods. With a donation of BDT 30 million, EBL aims to alleviate the sufferings of flood victims in northeastern and southeastern Bangladesh which will help them to recover and rebuild their lives. Additionally, recognizing the challenges faced by vulnerable communities during the harsh winter months, the bank has contributed 50,000 blankets to ensure warmth and comfort for those enduring extreme cold.

EBL contributes to promoting the spirit of sports

EBL has made contribution to the Bangladesh Kabaddi Federation of BDT 10 million to facilitate the organization in arranging the "Kabaddi Tournament 2024". We have also donated BDT 2.50 million for arranging "Inter-Bank Football Tournament 2024". This contribution, made through Bangladesh Association of Banks, reflects EBL's commitment to promoting sports and fostering community engagement. By supporting this sporting event, EBL encourages athletic excellence, unity and a sense of pride among the people of Bangladesh.

Empowering grassroots women entrepreneurs: A 10-Day train-the-trainer program in Sylhet

EBL Women Banking went into partnership with PUM, a purpose-driven organization with skilled, dedicated, and entrepreneurial experts from Netherlands, and Trinamul Nari Uddyakta Society, a membership-based group of grassroots women entrepreneurs in Bangladesh.

They conducted a 10-day train-the-trainer program in Sylhet for 20 experienced entrepreneurs selected by Trinamul from various regions. The goal was to empower these participants with practical knowledge to assist emerging women entrepreneurs in the fashion sector within grassroots communities. This training focused on enhancing their capacity to better understand consumer preferences and market demand to boost sales.

EBL introduces online training program for women entrepreneurs

In Bangladesh, women entrepreneurs are rewriting the rules of economic empowerment despite societal barriers. Many women entrepreneurs lack formal training in business management, marketing, or financial literacy. These gaps often hinder the scalability of their ventures, making it harder to compete in an increasingly digital and globalized economy.

To reduce the gap, EBL has introduced "Financial Literacy and Entrepreneur Development Training" program exclusively designed for women entrepreneurs. Curated by ADB and Bangladesh Bank, the online training program aims at empowering women entrepreneurs in Bangladesh. This self-paced training provides practical knowledge, assessments, and certification, helping women borrowers from small enterprises enhance their business success.

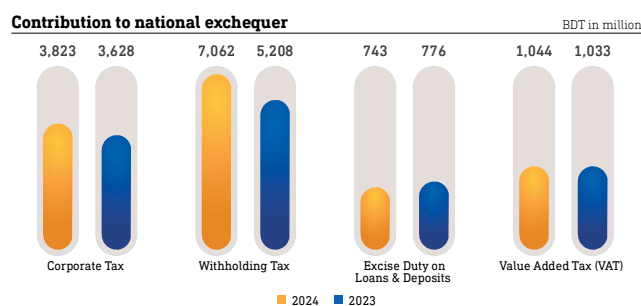


EBL introduces online training program for women entrepreneurs

Contribution to national exchequer

As a responsible corporate citizen, EBL consistently fulfills its tax obligations promptly, often ahead of deadlines.

We ensure timely deposits of withheld tax and VAT, deducted from employee salaries and payments to customers and vendors, into the government exchequer.



Way forward

- We are committed to driving positive changes through our strategic initiatives in education, healthcare, environmental sustainability, climate change mitigation and adaptation, sports and culture, disaster management, women's empowerment. These efforts are guided by our unwavering dedication to sustainability.
- In times of national crisis, we will proactively extend our support, ensuring meaningful assistance where it is most needed.
- We remain steadfast in our commitment to empowering underprivileged communities, fostering their development and advancing the sustainable progress of the society.